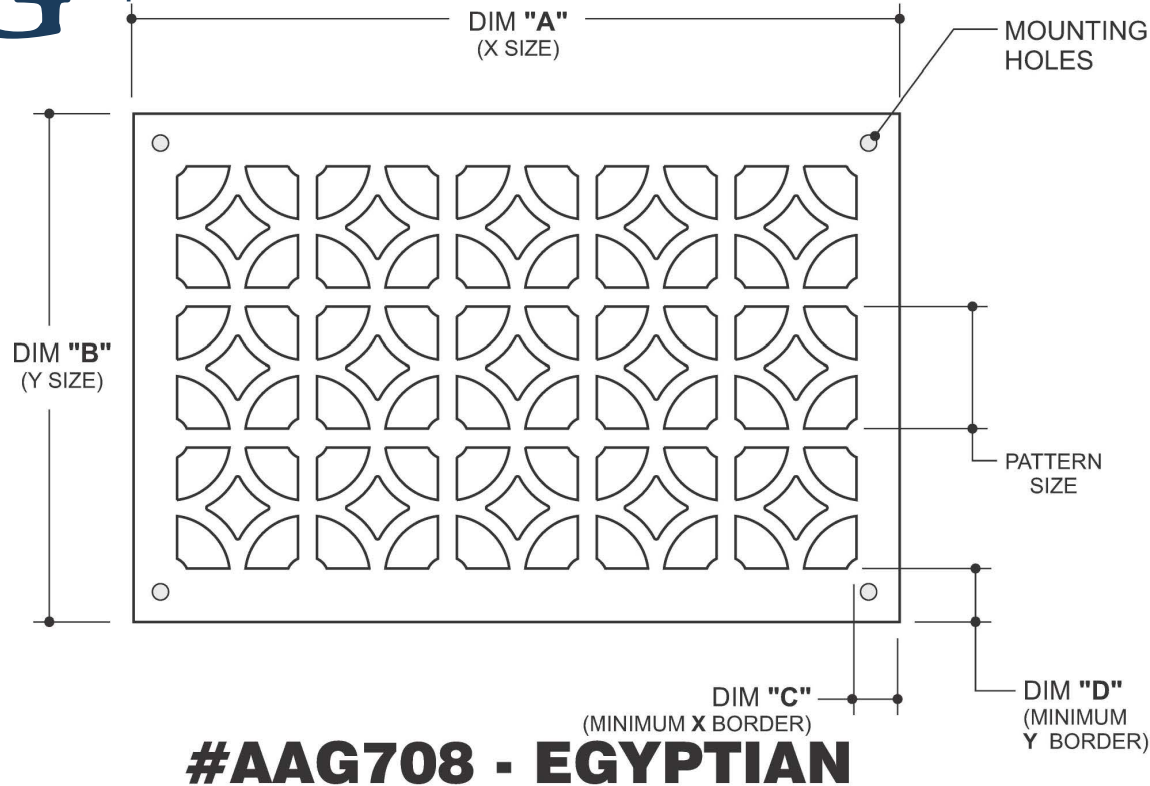




# ADVANCED ARCHITECTURAL GRILLEWORKS



**Pat #: AAG708**

STANDARD PATTERN SIZES  
**(SPECIFY ONE PER SHEET)**

2" SQUARE (52% OPEN)

1" SQUARE (47% OPEN)

NON-STD SIZE (SPECIFY)

MOUNTING HOLES:

YES  NO

COUNTERSINK:

YES  NO

MOUNTING HOLE DETAILS:


### ITEMS / DIMENSIONS

QTY	A	B	C	D

MATERIAL:	FINISH:	THICKNESS:
-----------	---------	------------

CUSTOMER:	PROJECT:	NOTES:
CONTACT:	ARCHITECT:	
PHONE:	ENGINEER:	
	CONTRACTOR:	

**Advanced Architectural Grilleworks**  
 149 Denton Avenue, New Hyde Park, NY 11040 Voice: 516-488-0628  
 Email: sales@agrilles.com

JOB #:

---

QUOTE #:

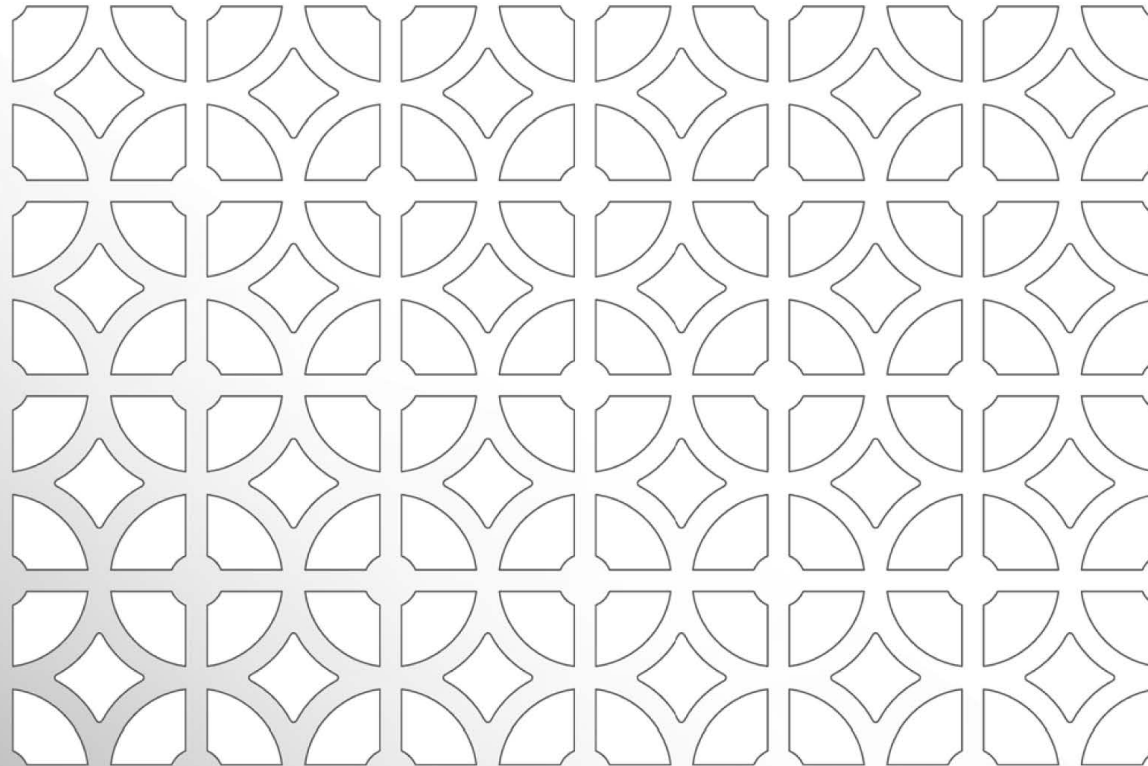


# ADVANCED ARCHITECTURAL GRILLEWORKS

FORM #

**AAG708-1**

**OPEN AREA = 47%**



1"  
PATTERN  
SIZE

WEB SIZE  
1/8" TYP.

## **AAG708 EGYPTIAN**

1 INCH PATTERN SIZE - FULL SCALE

### **Advanced Architectural Grilleworks**

149 Denton Avenue, New Hyde Park, NY 11040 Voice: 516-488-0628

Email: [sales@agrilles.com](mailto:sales@agrilles.com)

JOB #:

QUOTE #:

[www.agrilles.com](http://www.agrilles.com)

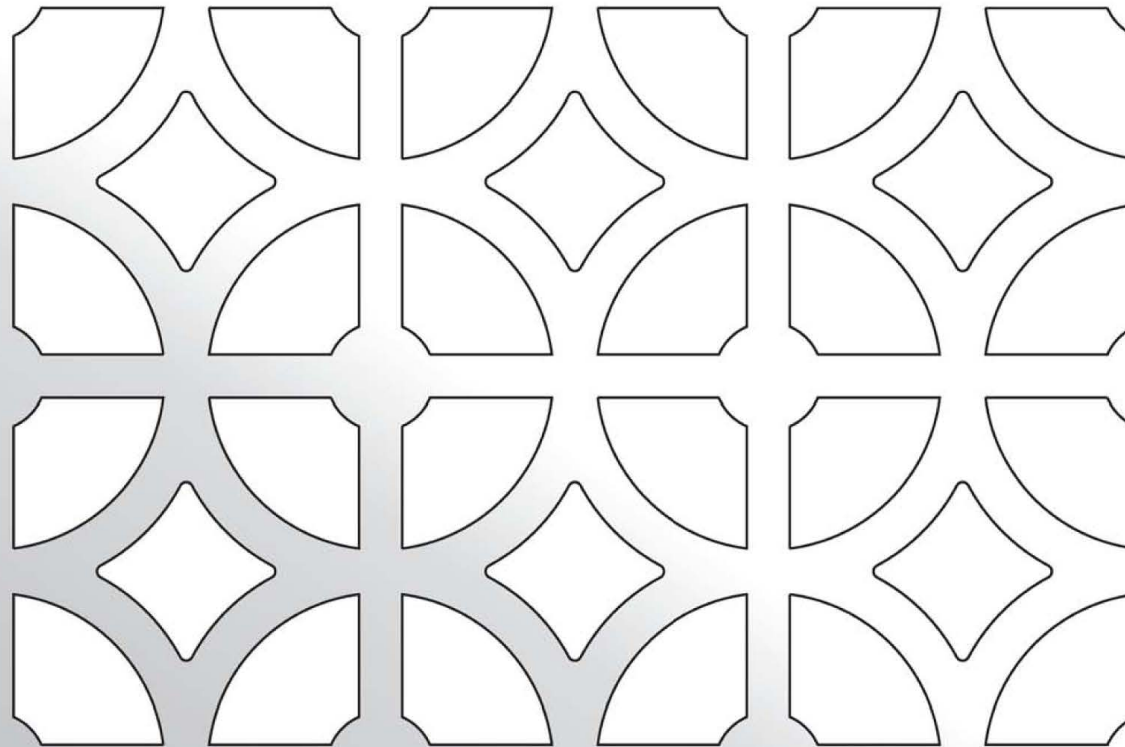


# ADVANCED ARCHITECTURAL GRILLEWORKS

FORM #

**AAG708-2**

OPEN AREA = 52%



2"  
PATTERN  
SIZE

WEB SIZE  
1/4" TYP.

## **AAG708 EGYPTIAN**

2 INCH PATTERN SIZE - FULL SCALE

### Advanced Architectural Grilleworks

149 Denton Avenue, New Hyde Park, NY 11040 Voice: 516-488-0628

Email: sales@aagrilles.com

JOB #:

QUOTE #: